

AfricanArtFusion

SCULPTURED ART & PAINTED VISIONS



VALLEY OF THE FISH EAGLE



EDITION (15)

18-KARAT GOLD SCULPTURE ON A WATER COLOUR PAINTED LANDSCAPE

58 X 46CM [FRAMED SIZE]

The eagle's cry of the bushveld echoes through this captivating artwork, where the majestic fish eagle is sculptured, soaring gracefully above the serene waters of the Okavango Delta in Botswana, clutching its freshly caught prey in its powerful claws. The scene captures a moment of triumph and beauty as the eagle's call reverberates through the tranquil valley, adding a mystical quality to the atmosphere. The quiet stillness of the river mirrors the bird's powerful presence, while a light mist creates a heavenly aura, softening the outlines of the thorn trees that fade into the distance. The bushveld, bathed in a soft, misty veil, evokes a sense of timelessness and the raw beauty of nature, inviting viewers to experience the peaceful yet vibrant life of this iconic African landscape.



[MORE INFO >>](#)

LAST LIGHT OVER TABLE BAY



EDITION (50)

18-KARAT GOLD PLATED SCULPTURE ON A GICLÉE PRINT

53 X 65CM [FRAMED SIZE]

The iconic shape of Table Mountain is beautifully rendered in 18-karat gold plate, capturing its majestic presence as seen from across Table Bay at Blouberg. This golden depiction of the mountain stands out against a tranquil seascape, where the ocean is portrayed in soft tones of turquoise, cyan, and aqua-blue. The gentle movement of the waves is delicately illustrated as they break onto the beach, adding a sense of calm and serenity to the scene. The sky is portrayed in pastel tones, enhancing the peaceful ambience of a calm summer's day just after sunset, which evokes a sense of timeless beauty and serenity.



[MORE INFO >>](#)

SENTINEL GAZE



EDITION (20)

18-KARAT GOLD PLATED BRASS SCULPTURE ON A GICLÉE PAINTED PRINT

37 X 27CM [FRAMED SIZE]

"Sentinel Gaze" portrays a lone cheetah, sculpted in 18-karat gold plate, poised on a flat plateau overlooking a serene valley in the African bushveld. The scene is rendered in a monochromatic sepia tone, giving it a timeless, tranquil quality. Thorn trees line the valley's edges on low-lying hills, framing the open grassland. The cheetah's vigilant posture suggests a readiness to hunt, embodying elegance and alertness in this quiet, serene canvas of nature.



[MORE INFO >>](#)

GOLDEN SOLITUDE



EDITION (20)

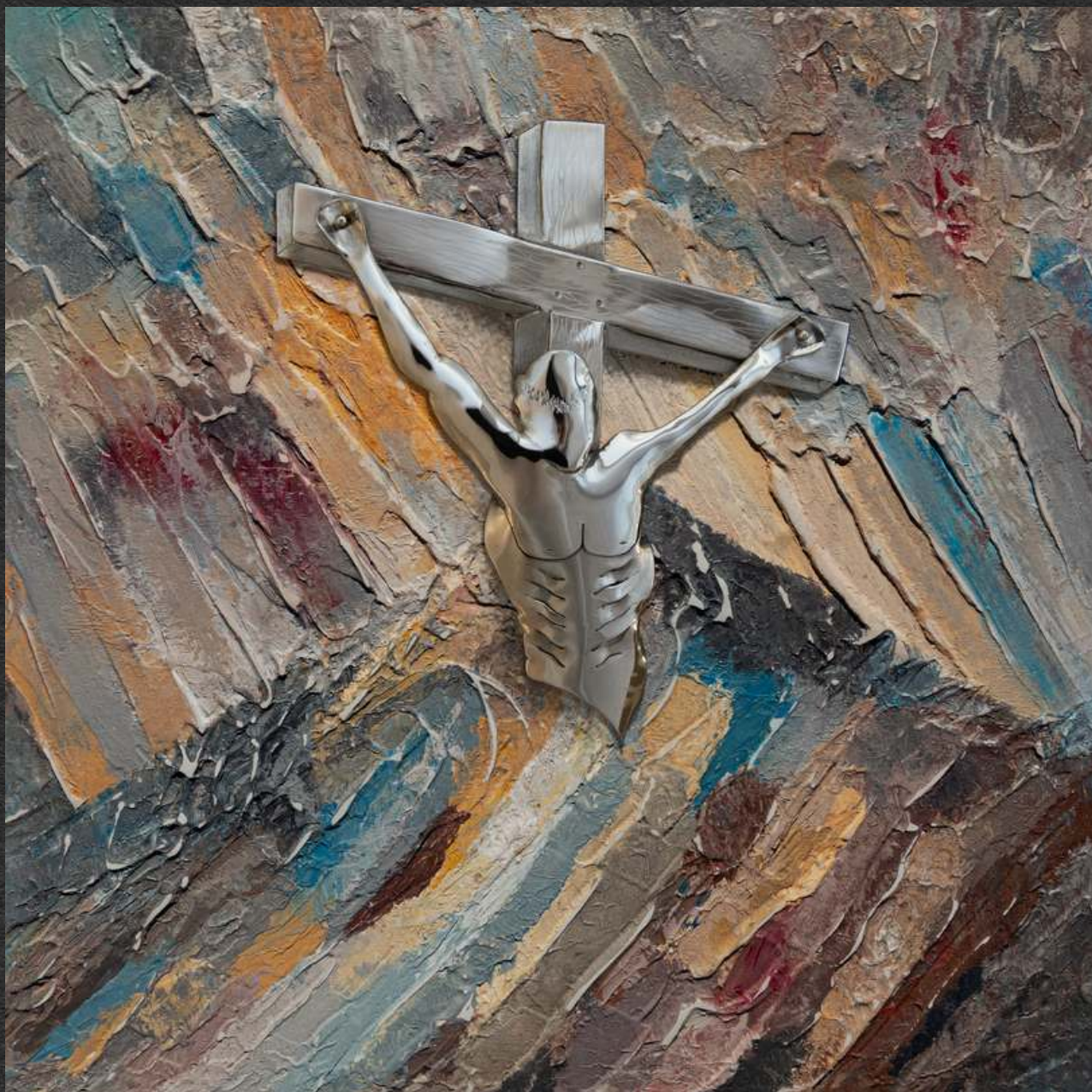
18-KARAT GOLD PLATED BRASS SCULPTURE ON ACRYLIC AND WATER COLOUR PRINT

65 X 48CM [FRAMED SIZE]

The solitary journey of a lone cheetah, sculpted in 18-karat gold, is portrayed as it walks past a thorn tree in a dry, parched landscape. The cracked soil underfoot emphasises the harshness of the environment, while the scene extends towards the open plains of the Serengeti. The golden light of the setting sun creates a tranquil yet poignant atmosphere, capturing a fleeting moment of beauty and serenity in the wild.



[MORE INFO >>](#)



HEAVENLY ASCENT

Heavenly Ascent" is an abstract portrayal of Jesus Christ's crucifixion at Calvary, using a blend of pastel colours. The artwork captures the profound moment of sacrifice, focusing on the immense love Jesus showed by giving up His life for humanity. The figure of Jesus, still on the cross, highlights the depth of His love and the redemptive power of His sacrifice.

The artwork also conveys the turmoil in heaven as God turned His face away from His Son, a moment filled with anguish among the angels, who did not understand the necessity of this act for the salvation of mankind. The use of pastel colours portrays the ultimate outcome of this sacrifice, creating a serene yet poignant atmosphere that reflects the triumph of light over darkness and the promise of salvation..

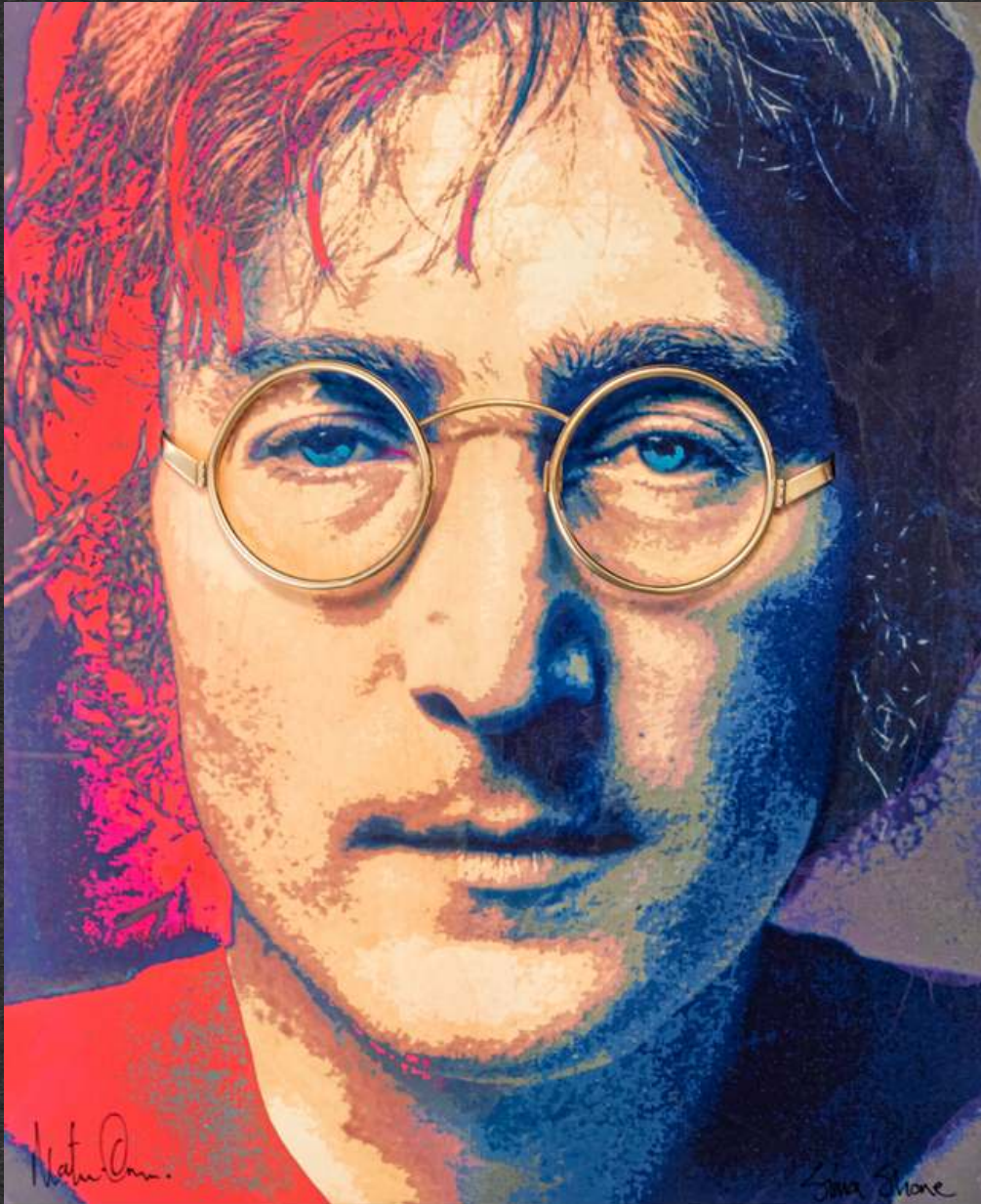
1/1

BRIGHT NICKEL PLATED BRASS SCULPTURE ON A TEXTURED ACRYLIC MIXED MEDIA PAINTING

58 X 58CM [FRAMED SIZE]



[MORE INFO >>](#)



EDITION (10)

18-KARAT GOLD SCULPTURED SPECTACLES ON AN INK AND WATERCOLOUR PAINTING
40 X 60CM [FRAMED SIZE]

GOLDEN VISION

"Golden Vision" is a vibrant pop art portrait of the iconic musician John Lennon, created by Martin Osner using colour ink and watercolour paint. The piece captures the brilliance of Lennon's talent, with a standout feature being the 18-karat gold-plated glasses sculpted by Simon Shone.

The golden glasses not only highlight Lennon's iconic style but also symbolise the timeless and enduring impact of his music and vision. The artwork celebrates Lennon's creative genius and his lasting influence on music and culture. Imagine that!



[MORE INFO >>](#)



KAMBAKU OF THE KRUGER

"Kambaku" is a captivating artwork that honours the majestic patriarch elephant, renowned for his solitary reign over an expansive territory between the Timbavati and Crocodile rivers in Southern Africa. As the third member of the legendary "Magnificent Seven," Kambaku stands as a symbol of strength and majesty, depicted here in all his regal glory.

The artwork is richly textured, with the background painted using a palette knife technique. This method adds depth and mystery to the piece, evoking the rugged and enigmatic nature of the wilderness Kambaku called home. The layered textures suggest the complex and untamed environment that was his domain, while also emphasising his solitary and powerful presence.

Kambaku's life, marked by his unique independence and tragic end at the hands of poachers in 1985, is poignantly captured in this piece. The textured background and the imposing figure of the elephant combine to create a sense of reverence and solemnity.

This artwork not only celebrates Kambaku's legacy but also serves as a poignant reminder of the need for conservation and the protection of wildlife.

1/1

18-KARAT GOLD PLATED SCULPTURE ON AN ORIGINAL PAINTING

79 X 79CM [FRAMED SIZE]



[MORE INFO >>](#)



EMERALD GUARDIAN

"Emerald Sentinel," features a black rhino embedded into the shape of the African continent, emphasising the deep connection between this majestic creature and its homeland, particularly Southern Africa.

Skilfully created by Simon Shone, the rhino stands as a symbol of strength and resilience. The map of Africa, creatively woven by Martin Osner, is rendered in earthy emerald green tones, representing the continent's rich natural heritage and diverse cultures.

The earthy emerald green palette evokes a sense of natural harmony, reflecting the preciousness of Africa's landscapes and the vibrant cultures that span its vast expanse.

The woven tapestry technique underscores the interconnectedness of life and cultures throughout Africa, celebrating the unity and diversity of the continent.

This artwork highlights the urgent need to intensify conservation efforts, focusing on protecting the black rhino from the growing threat of poaching. It serves as a powerful call to action to safeguard this magnificent animal for future generations, preserving both the species and the natural beauty of Africa's wildlife heritage.

EDITION (10)

NICKEL-PLATED SCULPTURE ON PAPER WEAVE MONTAGE

47 X 47CM [FRAMED SIZE]



[MORE INFO >>](#)

ECHOES OF THE GOLDEN LAND



EDITION (10)

18-KARAT GOLD-PLATED SCULPTURES ON A ON A GICLÉE PRINT

61 X 137CM [FRAMED SIZE]

As the wild dogs of Southern Africa traverse the arid, drought-stricken bushveld, they embody resilience and teamwork in a harsh and unforgiving landscape. This artwork captures two wild dogs walking side by side, navigating the parched terrain with determination. The dry thorn tree they pass symbolizes the endurance required to survive in such extreme conditions. Above them, an eagle circles in the sky, ever vigilant and seeking an opportunity, highlighting the interconnectedness of all life in the wild.

The scene unfolds during the golden hours just before sunset, with the warm, golden light casting a beautiful yet intense glow over the land. This fleeting time of day offers a brief respite from the oppressive heat, and with it, a glimmer of hope that rain might soon bring relief to the parched earth. The artwork tells a story of survival, resilience, and the enduring spirit of the wild, even in the face of natural adversity.



[MORE INFO >>](#)

WINGS OF LIBERATION



EDITION (10)

NICKEL PLATED SCULPTURES ON A ON A GICLÉE PRINT

61 X 137CM [FRAMED SIZE]

Liberation and joy are beautifully captured in this artwork featuring two eagles in flight against a painterly sky. The sky, rendered in a serene palette of golden and blue hues, blends into a pastel scheme that evokes a sense of calm and tranquillity. The simplicity of the composition, with the eagles soaring freely, underscores the powerful message of freedom and the exhilaration of flight beyond boundaries. This minimalist depiction emphasizes the beauty of nature's pure, unadulterated joy, inviting viewers to embrace the boundless possibilities and serenity found in simplicity.



[MORE INFO >>](#)



REDEMPTION OF MANKIND

In the artwork titled "Redemption of Mankind," the empty cross of Calvary, sculpted in bronze by Simon Shone, stands prominently below Lion's Head, adjacent to Table Mountain, with Devil's Peak on the left.

This piece draws from the symbolic naming of Table Mountain as the "Table of the Last Supper," with Devil's Peak representing Judas Iscariot and Lion's Head symbolizing the Lion of Judah. The bronze cross sculpture, placed just below the peak, signifies the sacrifice of Jesus Christ.

Blood is depicted flowing from the cross, symbolising Christ's sacrifice and its redemptive impact on all mankind. Light radiates from the cross, illuminating the people below and representing hope, salvation, and divine presence.

The iconic shape of Table Mountain serves as the backdrop, painted under a Van Gogh-inspired sky with swirling patterns and vibrant hues. The artwork also incorporates the bright colours of the Rainbow Nation of South Africa, symbolising diversity and unity.

Martin Osner painted the scene using acrylic and oil paints, employing a palette knife and brush to create a textured, dynamic surface. This blend of mediums and techniques beautifully merges the natural beauty of the landscape with profound spiritual symbolism, capturing the essence of redemption and hope for all.

ORIGINAL 1/1

BRONZE BRASS SCULPTURE ON AN ORIGINAL PAINTING

89 X 89CM [FRAMED SIZE]



[MORE INFO >>](#)

Embracing the Fusion of Artistic Passions

Simon Shone and Martin Osner's collaboration under "African Art Fusion" celebrates artistic creativity and cultural heritage. This unique partnership merges their distinct talents to create a diverse collection that includes bushveld landscapes, iconic places like Table Mountain, vibrant urban scenes, and abstract art. As personal friends of faith, Simon and Martin have come together through a mutual love and appreciation of each other's gifting and art style.

Simon Shone, a master goldsmith, craftsman, and sculptor, has distinguished himself with unique and expressive pieces, having worked with noble metals since 1987. Trained under a renowned German designer, Simon developed a signature style that captures the essence of form and movement, often inspired by wildlife. His works, crafted in precious metals such as gold, silver, and bronze, are more than decorative—they are hand-crafted conversation pieces that evoke deep emotional responses. Simon's creations have caught the attention of notable figures worldwide, including sports legends like Ernie Els and Lance Armstrong as well as well-known politicians and celebrities. This collaboration with Martin Osner marks another exciting chapter in his continually evolving artistic journey.

Martin Osner's artistic path began with an unexpected introduction to photography in 1984, leading him on a transformative journey that blends traditional painting with fine art photography. His work is characterised by simplicity, honesty, and a deep emotional connection, viewing the world through a photographer's lens with a painter's sensibility. Influenced by great artists such as Henri Cartier-Bresson, Ansel Adams, Henri Matisse, and Jackson Pollock, Martin's portfolio spans social commentary, documentary photography, landscapes, vibrant urban scenes, and abstract art. In "African Art Fusion,"

Simon and Martin engage in various creative processes. Sometimes, Simon crafts the three-dimensional sculptured elements first, and Martin then creates the surrounding scene. Other times, Martin's conceptual landscapes and urban scenes inspire Simon's sculptural additions. They also occasionally work independently, later merging their visions into cohesive pieces. This collaborative effort highlights the richness of African art, celebrating the continent's vibrant culture and landscapes. Through "African Art Fusion," Simon Shone and Martin Osner showcase their talents while exploring new artistic horizons.

Their works are a testament to the power of collaboration and the endless possibilities that arise when two creative minds unite, offering a unique fusion of sculpture and visual storytelling. Through "African Art Fusion," Simon Shone and Martin Osner showcase their collaborative works at their exclusive gallery in the Clock Tower at the famous Waterfront district in Cape Town.



AfricanArtFusion

SCULPTURED ART & PAINTED VISIONS

Shop G07 Clock Tower Building, V & A Waterfront, Cape Town
+27 (0) 83 235 6451 +27 (0) 834721717 simonsays@hbic.co.za info@osnergallery.com
www.osnergallery.com/african-art-fusion