

# TIMELESS TRANSCENDENCE

30 Nov - 28 Dec '24



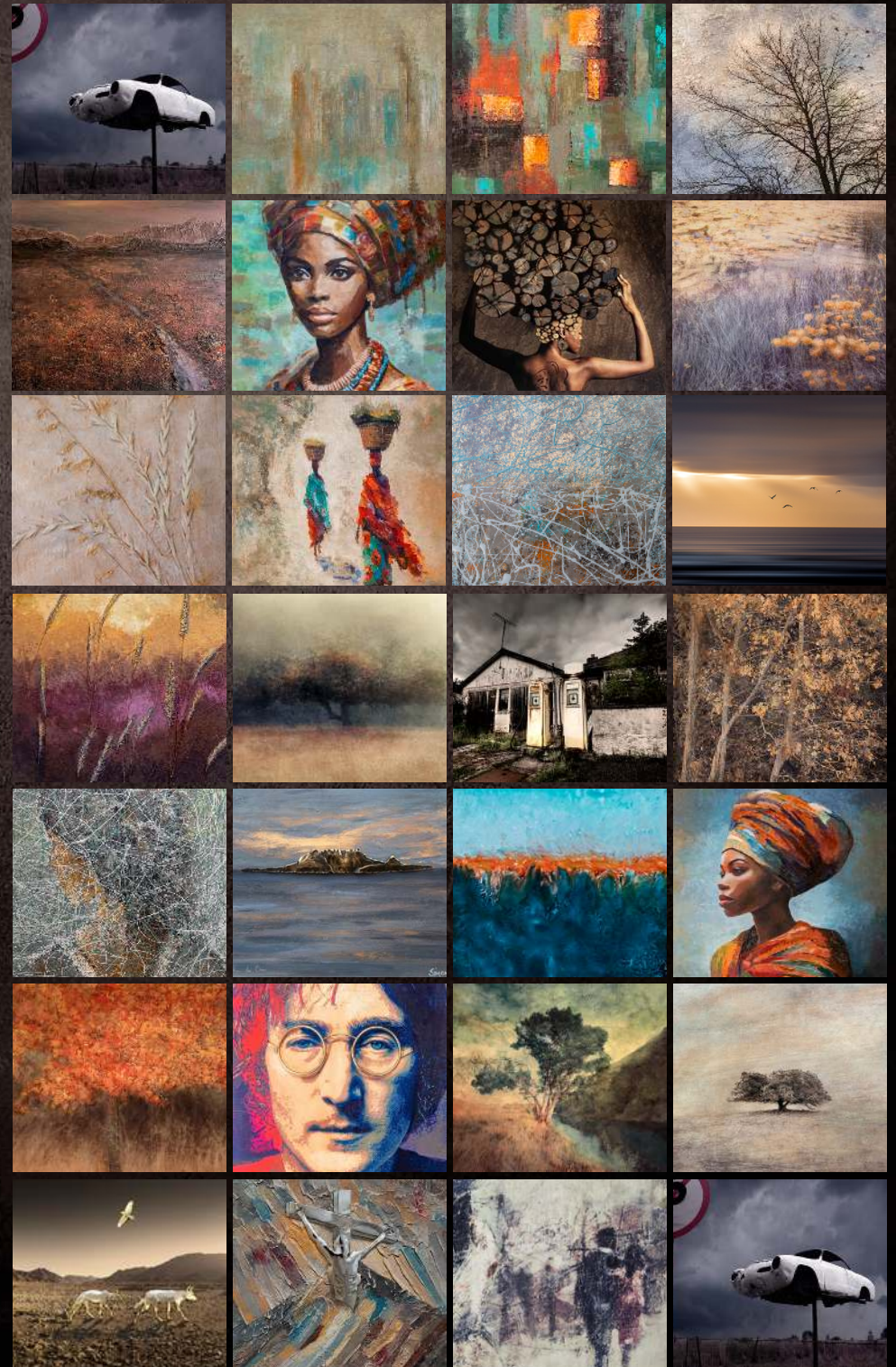
**OSNER**  
GALLERY

PRIVATE COLLECTION



# TIMELESS TRANSCENDENCE

Samantha Lee Osner  
Simon Shone  
Martin Osner







## HARMONY IN BLOOM

Samantha Lee Osner

Limited Edition (3)

120 x 80cm

Mixed media - Acrylic and Ink  
on Canvas





## AUTUMN BLAZE



Samantha Lee Osner  
Limited Edition (20) | 89cm x 58cm  
Paint on Fine Art Paper



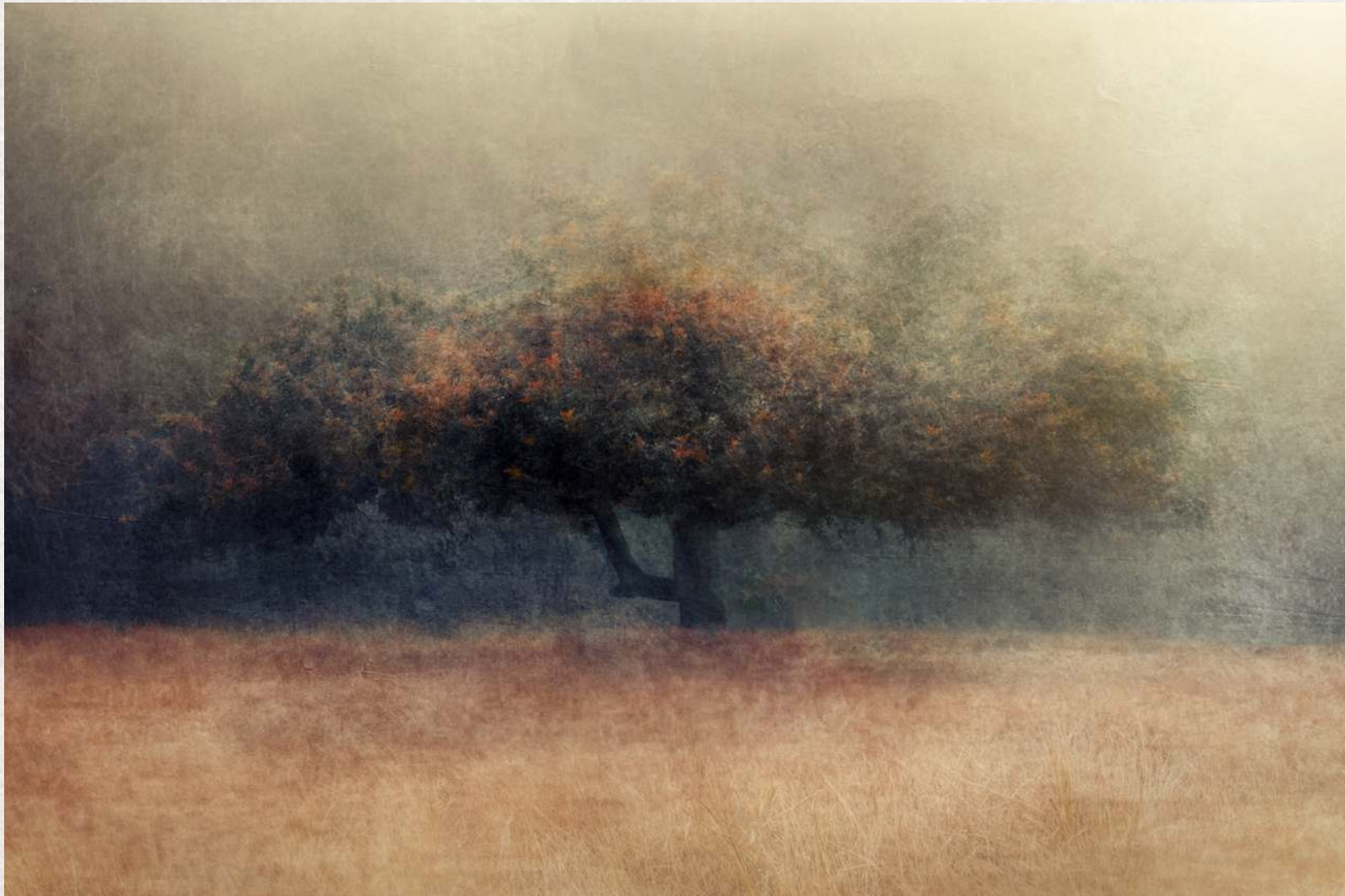




## PATTERN OF THE UNSPOKEN

Martin Osner  
Original Artwork  
51cm x 38.5cm  
Paint on Cotton Rag

HOLLOW WHISPER



Samantha Lee Osner  
Limited Edition (7) | 94cm x 74cm  
Ink and Paint on Fine Art Paper







## THREADS OF ALCHEMY

Martin Osner  
Original Artwork  
64cm x 80cm  
Paint on Metal (Aluminium)



GOLDEN GIRLS  
AFRICAN QUEEN COLLECTION



Martin Osner  
Original Artwork | 57cm x 65cm  
Paint on Canvas







## CITY OF GOLD

Martin Osner  
Original Artwork  
65cm x 65cm  
Paint on Metal  
(Aluminium)







## GOLDEN TWILIGHT

Samantha Lee Osner

Original Artwork

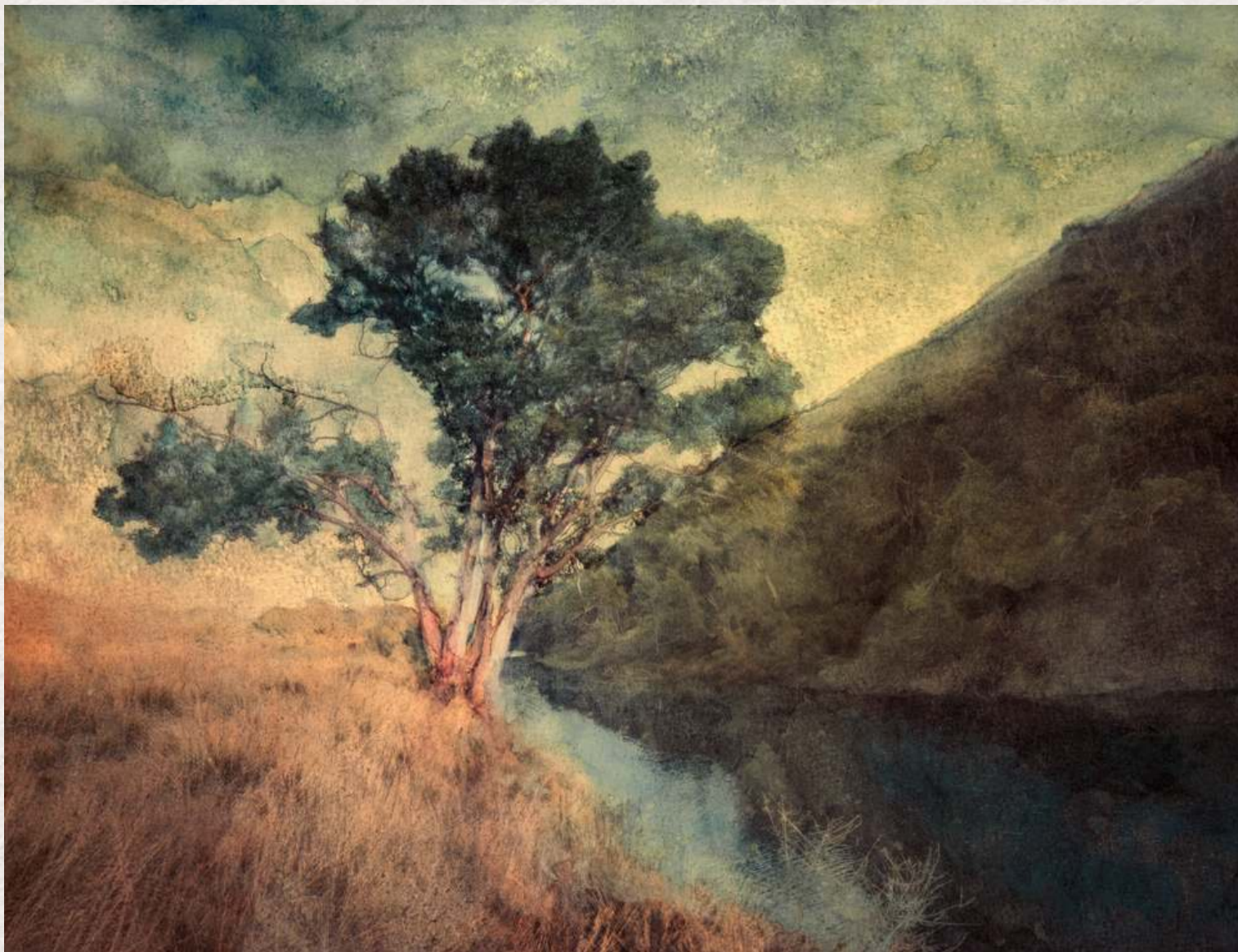
41 X 54cm

Paint on Metal (Aluminium)





ECHOES OF THE VALLEY



Martin Osner  
Edition (20) | 82 x 64cm  
Watercolour technique on Fine Art Paper







**SHADOWS OF SILENCE**

Samantha Lee Osner  
Limited Edition (12)

103 x 93cm

Paint on Fine Art Paper







## TRANSCENDENCE

Samantha Lee Osner  
Limited Edition (7)

95.5cm x 95.5cm

Paint & Ink on Canvas



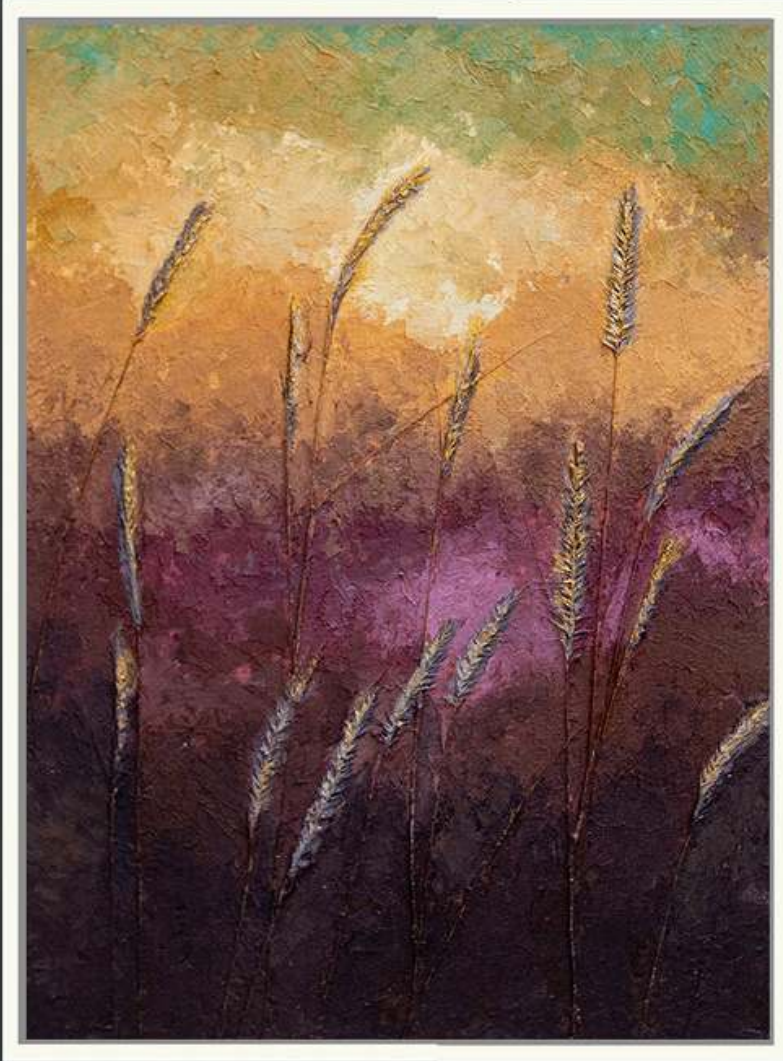


## TIMELESS

Martin Osner  
Original Artwork  
102.5cm x 82.5cm  
Acrylic and ink on canvas







## WHISPERS OF DAWN

Martin Osner  
Original Artwork  
75cm x 55cm  
Paint on metal





**NOBUHLE**  
AFRICAN QUEEN COLLECTION

Martin Osner  
Original | 105cm x 87.5cm  
Paint and ink on Canvas





## BLOSSOM

Samantha Lee Osner  
Original Artwork  
30 x 20cm  
Paint on Metal





# SOPHIA



Martin Osner  
Original Artwork | 54cm x 54cm  
Paint on metal







ABSTRACT ALCHEMY  
COLLECTION

Martin Osner  
Original Artworks  
20cm x 14cm  
Paint on Metal

email [info@osnergallery.com](mailto:info@osnergallery.com)  
for details







## HEAVENLY ASCENT

Simon Shone

& Martin Osner

Original Artwork

58cm x 58cm

Nickel plated brass

sculpture on a textured

acrylic mixed media

painting done on Metal

(Aluminium)







HEAVENLY AURA

Samantha Lee Osner  
180cm x 66cm  
Giclée Print on Fine Art Paper







## SHADOWS OF MEMORY

Martin Osner

Original Artwork

18cm x 15.3cm

Transfer & Encaustic Medium

email [info@osnergallery.com](mailto:info@osnergallery.com)  
for details





ABANDONED #1



Martin Osner  
Limited Edition (35) | 100cm x 77cm  
Giclée Print on Fine Art Paper





ABANDONED #17



Martin Osner  
Limited Edition (35) | 100cm x 77cm  
Giclée Print on Fine Art Paper





MOONLIGHT OVER TABLE BAY



Simon Shone & Samantha Lee Osner  
Limited Edition (15) | 36cm x 27cm  
Nickle plated sculpture on painted metal (Aluminium)





ECHOES OF THE GOLDEN LAND

Simon Shone & Martin Osner  
Limited Edition | 10  
61cm x 137cm

18-karat gold-plated sculptures on a giclée print







ADORN NO.2

Martin Osner  
Limited Edition | 20  
141cm x 110cm  
Paint on Fine Art Paper







## GOLDEN VISION

Simon Shone & Martin Osner  
Limited Edition | 10

40cm x 60cm

18-karat Gold sculptured spectacles  
on an ink and watercoloured  
painting

Martin Osner

Simon Shone







**THANDIWE**  
AFRICAN QUEEN COLLECTION

Martin Osner  
Original Artwork  
78cm X 60cm  
Acrylic and Ink on Canvas







**FORTITUDE**  
PRÈCIS COLLECTION

Samantha Lee Osner

Edition (3)

180cm x 150cm

Ink, Oil and Acrylic Paint on Canvas







As the daughter of a fine art photographer, Samantha grew up surrounded by; cameras, lenses, studios and darkrooms, so it seems her fate was a fait accompli.

To her, photography is about capturing the beauty of a moment that lasts forever, a moment in time that can never be repeated.

She is fortunate to have found her passion at an early age under the guidance and mentorship of her father, fine art photographer and artist Martin Osner.

After studying at his photography school for several years, she started experimenting with art photography and was offered her first exhibition in 2016.

Lights, camera, action and her career as an art photographer had begun.

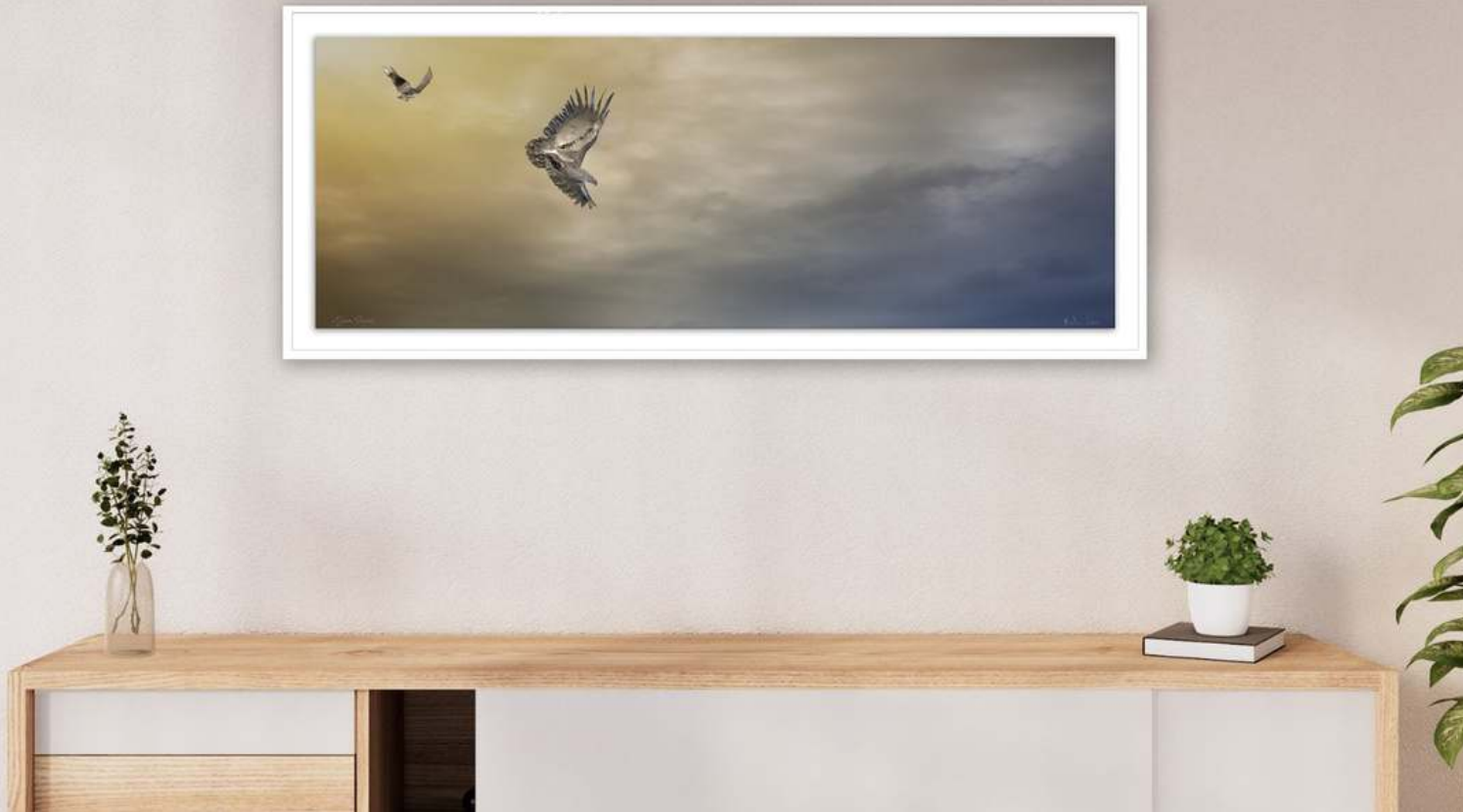
Samantha's stunning portfolio includes landscapes, portraits and mixed media prints in both limited and open editions; she is an artist who portrays minimalism, femininity, and elegance throughout her work.



## SAMANTHA LEE OSNER

*"SIMPLICITY IS THE ULTIMATE SOPHISTICATION."  
— LEONARDO DA VINCI*





Simon Shone is a master goldsmith, craftsman, and sculptor whose career spans over three decades. Trained under a renowned German designer, he has developed a signature style that captures the essence of form and movement, often inspired by the beauty of wildlife and nature. Working with precious metals like gold, silver, and bronze, Simon transforms raw materials into captivating conversation pieces that transcend functionality and evoke deep

emotional responses. Since 1987, his exceptional artistry has earned him a distinguished reputation, with works commissioned by international icons, including sports legends Ernie Els and Lance Armstrong, as well as influential politicians and celebrities. Passionate about exploring the possibilities of form and material, Simon continually innovates within the traditions of goldsmithing and sculpture, crafting timeless works that celebrate the artistry of hand-crafted design. Simon's collaboration with Martin

Osner under "African Art Fusion" has opened new avenues for artistic exploration, blending Simon's sculptural expertise with Martin's conceptual photography and fine art. Together, they create works that celebrate the richness of African culture and landscapes, seamlessly integrating sculptural elements with visual storytelling. Their combined talents are showcased at their exclusive gallery in the Clock Tower at Cape Town's Waterfront district, offering a unique fusion of sculpture



## SIMON SHONE

*"THROUGH MY CRAFT, I AIM TO EVOKE EMOTION AND CELEBRATE TIMELESS DESIGN".*

and fine art that honours the vibrant spirit of Africa and pushes the boundaries of creative expression. Through this partnership, Simon continues to craft art that resonates with the soul, merging the physical and poetic in profound and innovative ways.





My artistic journey has been a dynamic blend of traditional painting and fine art photography, evolving from limited editions to unique, original artworks. Photography entered my life unexpectedly in 1984, altering my path and becoming a medium that allowed me to embrace creativity while addressing my parents' concerns about the challenges of an art career. It became the foundation for an extraordinary

adventure, blending artistry with storytelling. Over the years, my approach has been shaped by simplicity, honesty, and self-discovery. Everyday life is my muse, and I see all subjects as potential compositions. While I view the world through a painter's eyes, my camera and lens are my tools, allowing me to transform light and composition into expressive works. My process is guided by emotion and experimentation, free from constraints, and often blending

photography with mixed media to create art that evolves organically. Today, I feel I have come full circle, equally at home behind the lens or holding a palette knife. I believe my path has been guided by a caring Creator, and my passion for art and photography is something I could never relinquish. It's not just what I do—it's who I am.



MARTIN OSNER

*"ART AND PHOTOGRAPHY ARE NOT JUST WHAT I DO—THEY'RE WHO I AM."*





## THE OSNER GALLERY

14 Luisa Way, Hout Bay, Cape Town.

Landline +27 (0) 21 7906494 | Mobile +27 (0) 834721717 | [info@osnergallery.com](mailto:info@osnergallery.com) | [www.osnergallery.com](http://www.osnergallery.com)

